

## Electrohydraulic Power Rod -MINI-

### Design and Function:

The H+L electrohydraulic power rod are highly dynamic, compact linear drives. The range of application from the type -MINI- expands to flow rates of 30 l/min.

The electronic control circuit converts the input parameters of speed, position and tool movement profile into signals which drive a low-power stepper motor. This movement is amplified highly dynamically by the hydro-mechanical closed loop of the hydraulic amplifier.

The hydromechanical closed loop operates without measuring systems or additional electronic control devices. This straightforward design concept ensures the ruggedness and reliability typical of our compact units.



### Advantages:

- Programmable speed, positions and tool feed profiles
- Hydromechanical closed loop, 4-way control
- High dynamic drive, smooth rod movement
- No measuring systems are required
- Construction kit system, cylinder execution variable
- Compact design

### Areas of Application:

- Positioning
- Forming
- Shearing
- Punching

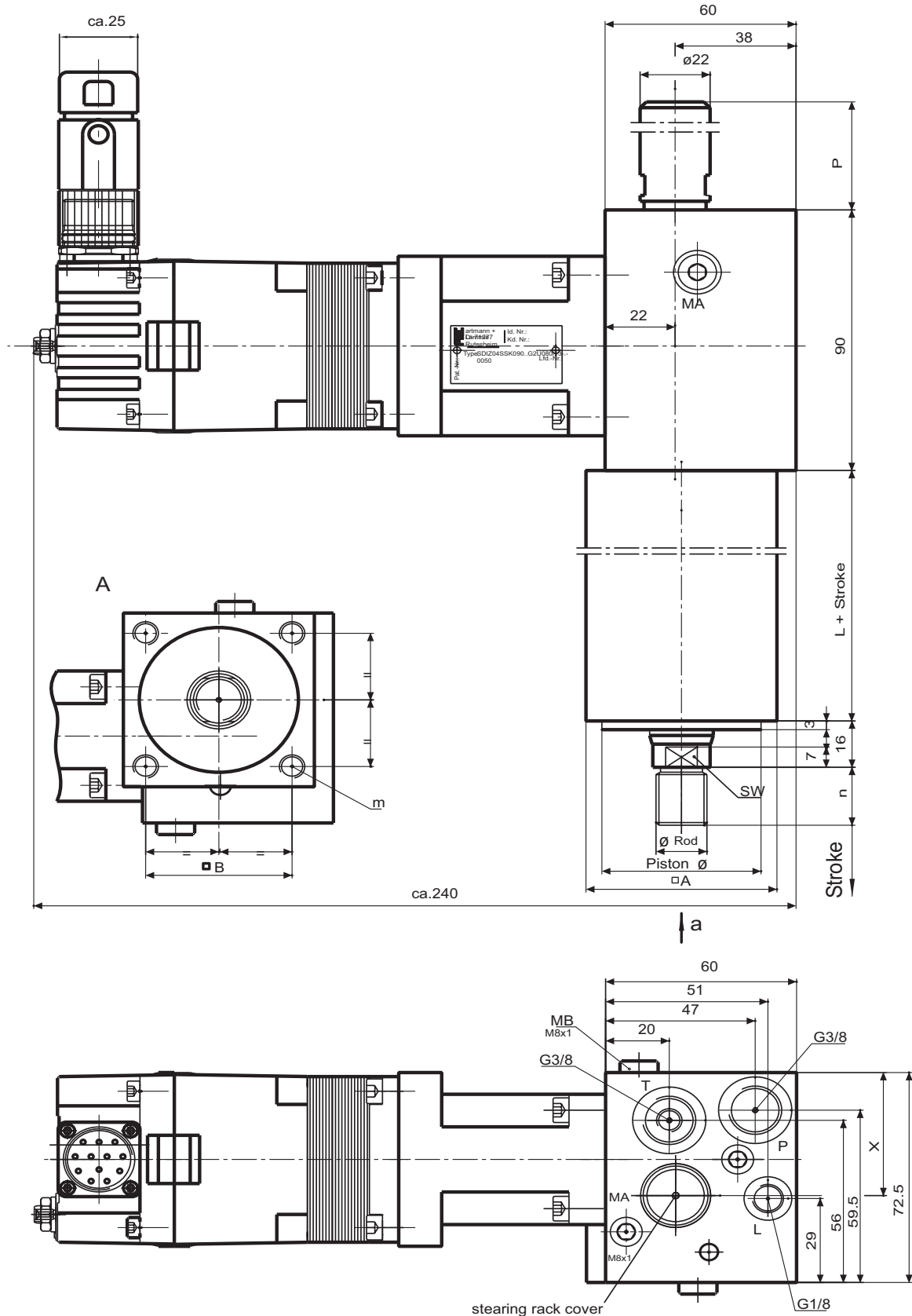
### Options:

- other cylinder design

The specifications given herein are subject to alteration

## Electrohydraulic Power Rod -MINI-

Basic Dimensions Drawing:



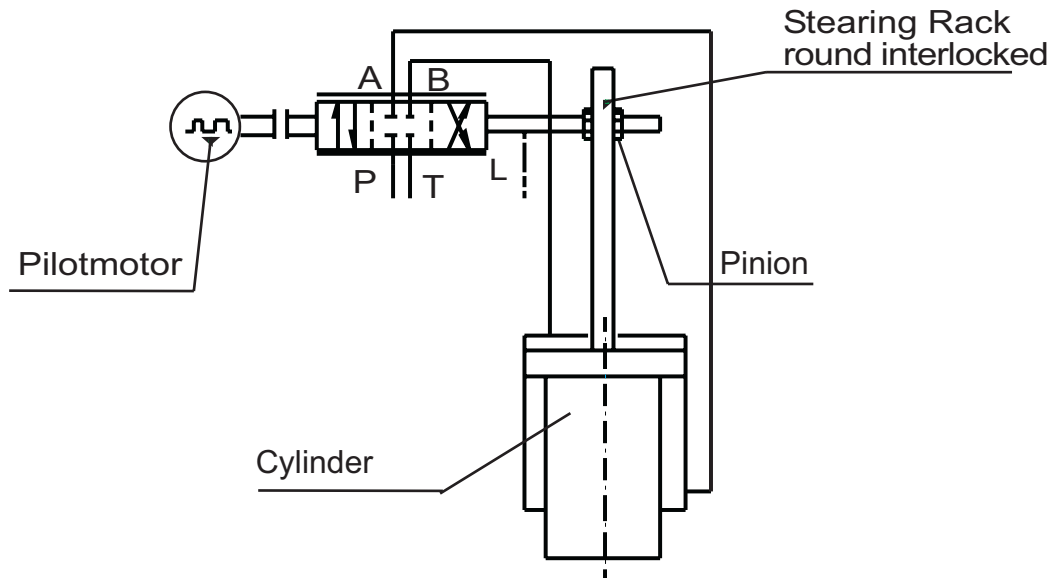
The specifications given herein are subject to alteration

## Electrohydraulic Power Rod -MINI-

### Standard Power Rod -MINI-:

Piston Ø	Rod Ø	P			L	□ A	□ B	SW	f	h	m	n	Dimension x	
		Stroke 50 mm	Stroke 100 mm	Stroke 150 mm									Pinion U=040	Pinion U=080
25	12	35	85	-	86,5	60	46	10	45	M10x1	M8	20	42,5	48,6
32	16	35	85	-	86,5	60	46	12	45	M12x1,25	M8	20	42,5	48,6
40	20	35	85	143	86,5	60	46	15	45	M16x1,5	M8	20	42,5	48,6
50	25	35	85	143	102,5	80	60	19	60	M20x1,5	M10	30	42,5	48,6
60	30	35	85	143	102,5	80	60	24	60	M24x1,5	M10	35	42,5	48,6

### Symbol:



The specifications given herein are subject to alteration

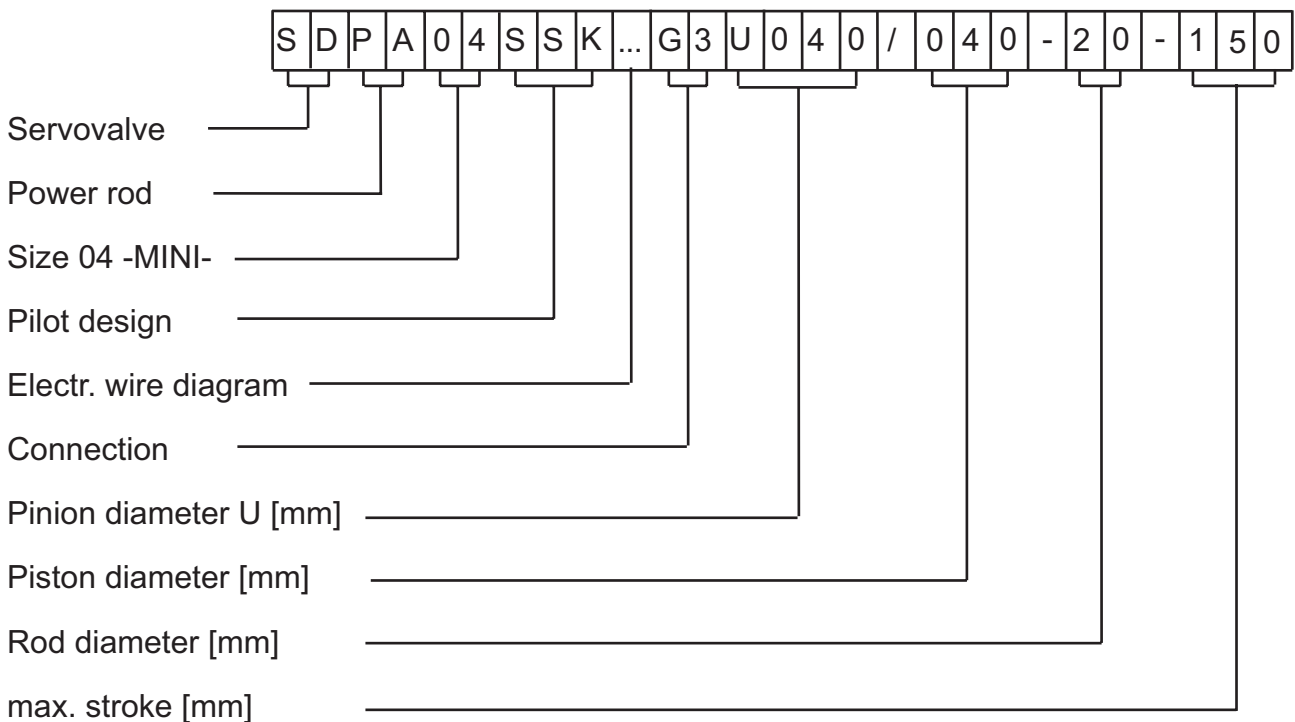
## Electrohydraulic Power Rod -MINI-

### Technical Specification:

Max. operating pressure	100 bar
Max. flow	30 l / min
Stroke length standard	50, 100 and 150 mm
Programmable step size	0,1 - 0,004 mm
Positioning accuracy	0,05 mm
Max. move speed *	to 500 mm/s
Pilotmotor	Stepperdrive 2 Phases 24V, 1,5A
Control	2 Phases power amplifier - Digital/Analog

\* depend on cylinder choice

### Type code:



The specifications given herein are subject to alteration